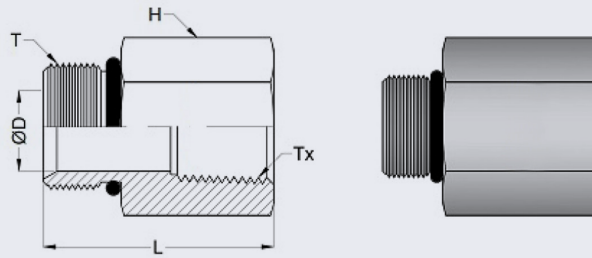
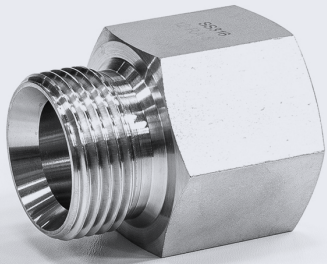


Equal Adaptor - Female x Male (NPT/BSPP) 316



- NERO's range of Equal Adaptors are available in BSPP x NPT thread form to allow more flexibility when joining fittings together with different threads
- Made from hexagon bar with a flat sealing face on the female end
- Pressure rating up to 200 BAR
- Can be supplied with 2.2 certificate of conformity - upon request
- BSPP threads are to ISO 228/1
- NPT threads are to ANSI/ASME B1.20.1
- At sizes 1/8" to 1/2" the fitting is a Gauge Adaptor

SIZE (Tx) NPT	SIZE (T) BSPP	PRODUCT CODE	L	ØD	H.INCH	KG EACH
1/8	1/8	AFM0202NP	26.4	4.8	9/16	0.022
1/4	1/4	AFM0404NP	28.6	5.6	3/4	0.047
3/8	3/8	AFM0606NP	32.6	6.6	7/8	0.066
1/2	1/2	AFM0808NP	38.1	11.1	1.1/16	0.16

**** Dimensions subject to change - Please contact us if critical ****

Other products you might like...

We stock a wide range of Hydraulic Fittings to suit your requirements



We also keep Reducing versions of this fitting + Bonded Washers in our Hydraulic range

