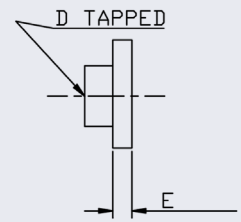
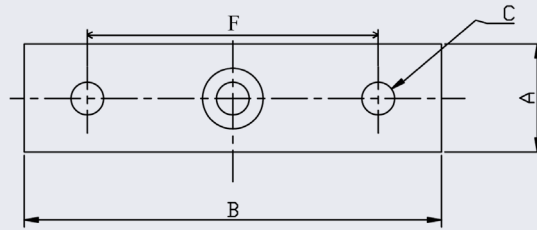
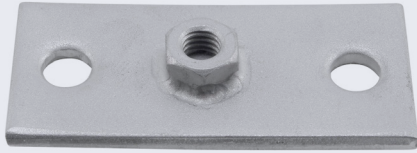


Back Plate With Boss (Metric)



NERO's range of Back Plates are made from 304L stainless steel and come with a metric tapped boss.

We also keep Welded & Seamless Nominal Bore pipe to suit these Back Plates when being used with the Threaded Rod & Bossed Pipe Rings + cutting service to suit all your needs.



CODE	A	B	C	D (SIZE)	E	F	KG / 100
BPM6	25	55	6	M6	3	35	4.40
BPM10	25	75	6	M10	3	56	4.90

**** Dimensions subject to change - Please contact us if critical ****

Other products you might like...

We also keep Bossed Pipe Rings and Threaded Rod to suit this Back Plate with Boss

