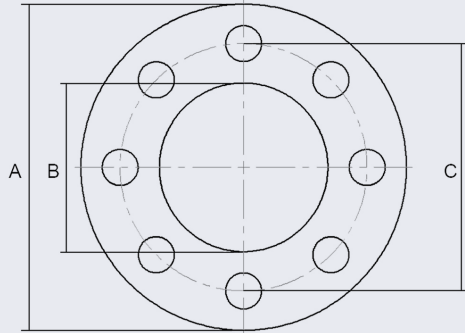


# PN16 EPDM FULL FACE GASKET 3MM THICK



PIPE SIZE (N.B)	DN	CODE	C	A	B
1/2	15	GE0.516FF3	65	95	22
3/4	20	GE0.7516FF3	75	105	27.5
1	25	GE1.016FF3	85	115	34.5
1.25	32	GE1.2516FF3	100	140	43.5
1.5	40	GE1.516FF3	110	150	49.5
2	50	GE2.016FF3	125	165	61.5
2.5	65	GE2.516FF3	145	185	74.7
3	80	GE3.016FF3	160	200	90.5
4	100	GE4.016FF3	180	220	116
5	125	GE5.016FF3	210	250	143.8
6	150	GE6.016FF3	240	285	170.5
8	200	GE8.016FF3	295	340	221.5
10	250	GE10.016FF3	355	405	276.4
12	350	GE14.016FF3	410	460	327
14	400	GE14.016FF3	470	520	359.5
16	450	GE16.016FF3	525	580	410.5

**\*\* Dimensions subject to change - Please contact us if critical \*\***

## Material data sheet

Material Reference	2349
Colour	Black
To Specification	Commercial

Basic Properties	Value	Test Method	Unit
Base Polymer Type	SBR/EPDM		
Indentation Hardness	60 Shore A -4 +5	ASTM D2240 00	Degrees
Specific Gravity	1.5 +/- 0.05	ASTM D792	g/cm <sup>3</sup>
Tensile Strength - Minimum	3	ASTM D412	Mpa
Elongation @ Break - Minimum	250	ASTM D412	%
Minimum Continuous Working Temperature	-20		°C
Maximum Continuous Working Temperature	70		°C
Maximum Intermittent Working Temperature	90		°C
Compression Set 70 Degrees 22 Hours	30% Max.	ASTM D395 Method B	%
Insertion Type	None		

### Guidelines for Use (It is the customers responsibility to ensure suitability of use)

Food Use Suitability	Not Recommended
Indentation Hardness	Moderate
Ozone Weather Resistance	Moderate
Flame Retardency	Not Recommended
General Purpose	Not Recommended