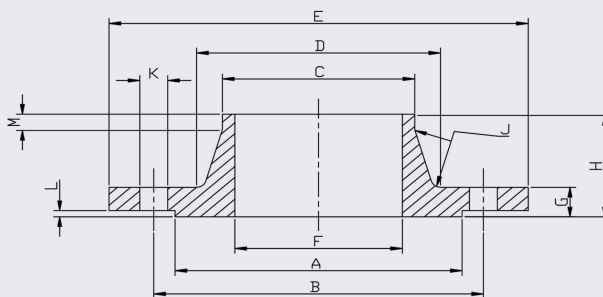
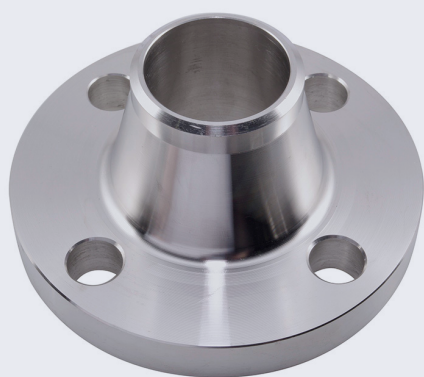


# 150LB Weld Neck Flange (304/L)



This flange conforms to ANSI/ASME B16.5 and is available in both 316/L and 304/L.

Full material traceability is available and 3.1B certification can be provided upon request.

Bolt kit sizes shown in the above table are for bolting two flanges together including the thickness of a gasket. If using a wafer pattern valve, longer bolts will be required.

PIPE SIZE	DN	SCHEDULE 10	SCHEDULE 40	A	B	C	D	E	F SCH10	F SCH40	G	H	J	K	L	M	BOLT	KG EACH	BOLT KIT CODE
1/2	15	F150WN0.5-304	F150WN0.5/S10-304	34.9	60.3	21.3	30.2	88.9	17.1	15.8	11.1	46.7	3	15.9	1.6	6.4	4XM12	0.50	BK02
3/4	20	F150WN0.75-304	F150WN0.75/S10-304	42.9	69.8	26.7	38.1	98.4	22.5	20.93	12.7	52.4	3	15.9	1.6	6.4	4XM12	0.70	BK03
1	25	F150WN1.0-304	F150WN1.0/S10-304	50.8	79.4	33.5	49.2	107.9	27.9	26.94	14.3	55.6	3	15.9	1.6	6.4	4XM12	1.10	BK03
1.25	32	F150WN1.25-304	F150WN1.25/S10-304	63.5	88.9	42.2	58.7	117.5	36.6	35.04	15.9	57.1	3	15.9	1.6	6.4	4XM12	1.50	BK03
1.5	40	F150WN1.5-304	F150WN1.5/S10-304	73	98.4	48.3	65.1	127	42.7	40.9	17.5	61.9	3	15.9	1.6	6.4	4XM12	1.80	BK03
2	50	F150WN2.0-304	F150WN2.0/S10-304	92.1	120.6	60.4	77.8	152.4	54.8	52.51	19	63.5	3	19	1.6	6.4	4XM16	2.70	BK04
2.5	65	F150WN2.5-304	F150WN2.5/S10-304	104.8	139.7	73.1	90.5	177.8	66.9	62.71	22.2	69.8	3	19	1.6	6.4	4XM16	4.40	BK06
3	80	F150WN3.0-304	F150WN3.0/S10-304	127	152.4	88.9	107.9	190.5	82.8	77.92	23.8	69.8	3	19	1.6	6.4	4XM16	5.20	BK06
4	100	F150WN4.0-304	F150WN4.0/S10-304	157.2	190.5	114.3	134.9	228.6	108.2	102.26	23.8	76.2	3	19	1.6	6.4	8XM16	7.50	BK07
5	125	F150WN5.0-304	F150WN5.0/S10-304	185.7	215.9	141.2	163.5	254	134.5	128.2	23.8	88.9	6.5	22.2	1.6	6.4	8XM20	9.20	BK10
6	150	F150WN6.0-304	F150WN6.0/S10-304	215.9	241.3	168.4	192.1	279.4	161.5	154.06	25.4	88.9	6.5	22.2	1.6	6.4	8XM20	11.00	BK10
8	200	F150WN8.0-304	F150WN8.0/S10-304	269.7	298.5	219.1	246.1	342.9	211.58	202.74	28.4	101.6	6.5	22.2	1.6	6.4	8XM20	18.30	BK12
14	350	F150WN14.0304	-	412.8	476.3	355.6	400.1	533.4	346.04	N/A	35.1	127	8	28.4	1.6	6.4	12XM24	48.4	BK19
16	400	F150WN16.0-304	-	469.9	539.8	406.4	457.2	596.9	396.84	N/A	36.6	127	10	28.4	1.6	6.4	16XM27	60.6	BK22

**\*\* Dimensions subject to change - Please contact us if critical \*\***

## Other products you might like...

We also keep Slip-On, Blind and Threaded flanges to this standard



We also keep Gaskets to suit all our Flanges in both EPDM and Non-Asbestos materials

