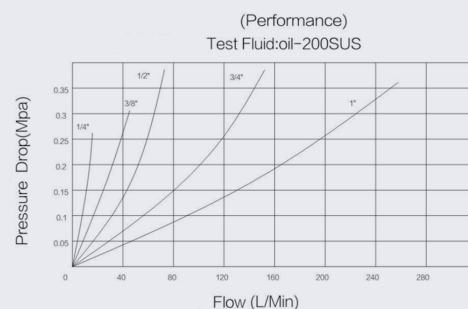
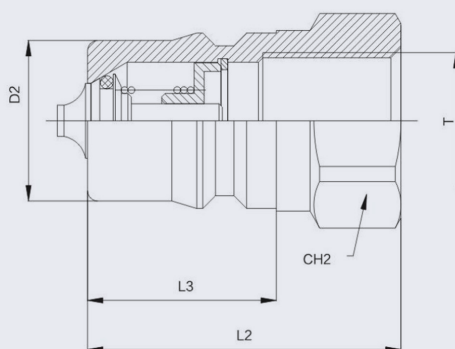


# Hydraulic Nipple (ISO-B) BSPP 304



- Available in 304 stainless steel (CF8)
- Sizes available 1/8" up to 1" (DN6 to DN25)
- -20°C to 180°C maximum temperature
- BSPP threaded to ISO 228-1
- 5000 PSI (1/8"-1/4") / 4000 PSI (3/8"-1/2") / 3000 PSI (3/4"-1")
- ISO 7421-1 Series B

SIZE	CODE	L2	L3	D2	CH2	*TOTAL LENGTH	FLOW (L/min)	KG / 100
1/8	QRN02	29	19	10.9	14	59	4	3
1/4	QRN04	36	22.8	14.2	19	72	11.5	4
3/8	QRN06	40	25	19.1	24	80	23	7
1/2	QRN08	46.5	28.0	23.6	28.5	93	45.5	13
3/4	QRN12	56	36	31.5	36	113	106	20
1	QRN16	63	45	37.8	41	127	190	34

\* This column denotes the total length when the nipple connected to the coupling

\*\* Dimensions subject to change - Please contact us if critical \*\*

## Other products you might like...

We also keep a large range of cam fittings to suit all your requirements



We keep the accompanying ISO-B coupling to be used with this nipple

