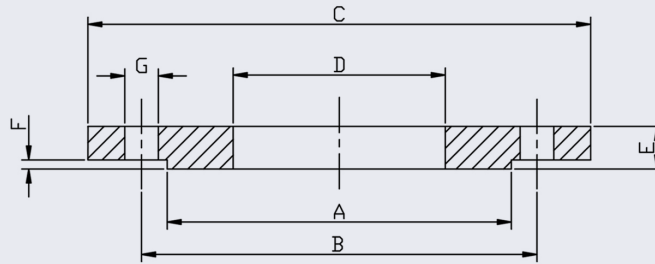
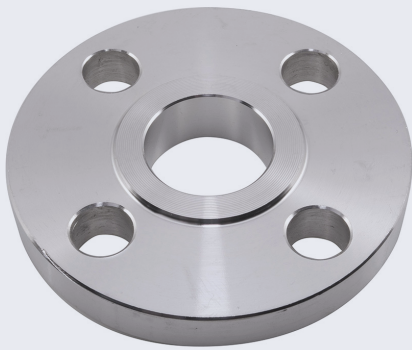


PN10 Slip-On Flange (316/L and 304/L)



This flange conforms to EN 1092-1 and is available in 316/L and 304/L.

Full material traceability is available and 3.1B certification can be provided upon request.

Bolt kit sizes shown in the above table are for bolting two flanges together including the thickness of a gasket. If using a wafer pattern valve, longer bolts will be required.

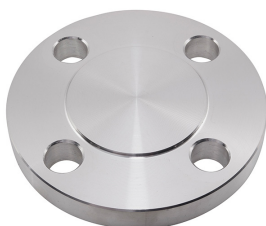
PIPE SIZE	DN	CODE 316	CODE 304	A	B	C	D	E	F	G	BOLT	KG EACH	BOLT KIT CODE
1/2	15	F1630.5	F1630.5-304	45	65	95	22	16	2	14	4XM12	0.68	BK03
3/4	20	F1630.75	F1630.75-304	58	75	105	27.5	18	2	14	4XM12	0.94	BK03
1	25	F1631.0	F1631.0-304	68	85	115	34.5	18	2	14	4XM12	1.11	BK03
1.25	32	F1631.25	F1631.25-304	78	100	140	43.5	18	2	18	4XM16	1.62	BK04
1.5	40	F1631.5	F1631.5-304	88	110	150	49.5	18	3	18	4XM16	1.86	BK04
2	50	F1632.0	F1632.0-304	102	125	165	61.5	20	3	18	4XM16	2.47	BK04
2.5	65	F1632.5	F1632.5-304	122	145	185	74.7	20	3	18	4XM16	3.00	BK04
2.5	65	F1632.5/8 HOLE	F1632.5-304/8 HOLE	122	145	185	74.7	20	3	18	8XM16	3.00	BK05
3	80	F1633.0	F1633.0-304	138	160	200	90.5	20	3	18	8XM16	3.79	BK07
4	100	F1634.0	F1634.0-304	158	180	220	116	22	3	18	8XM16	4.03	BK07
5	125	F1635.0	F1635.0-304	188	210	250	143.8	22	3	18	8XM16	5.46	BK07
6	150	F1636.0	F1636.0-304	212	240	285	170.5	22	3	22	8XM20	6.57	BK10
8	200	F1038.0	F1038.0-304	268	295	340	221.5	24	3	22	8XM20	9.28	BK08
10	250	F10310.0	F10310.0-304	320	350	395	276.5	26	3	22	12XM20	11.85	BK09
12	300	F10312.0	F10312.0-304	370	400	445	327.5	26	4	22	12XM20	13.61	BK09
14	350	F10314.0	F10314.0-304	430	460	505	359.5	30	4	22	16XM20	20.51	BK18
16	400	F10316.0	F10316.0-304	482	515	565	411	32	4	26	16XM24	25.91	BK21

* For 6" and below, PN10 are the same dimensions as PN16 as shown in the table above *

** Dimensions subject to change - Please contact us if critical **

Other products you might like...

We also keep Blind Flanges to this standard



We also keep Gaskets to suit all our flanges in both EPDM and Non-Asbestos materials

