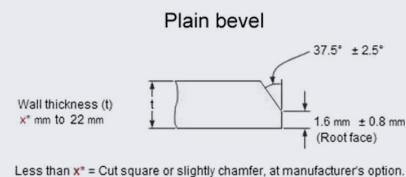
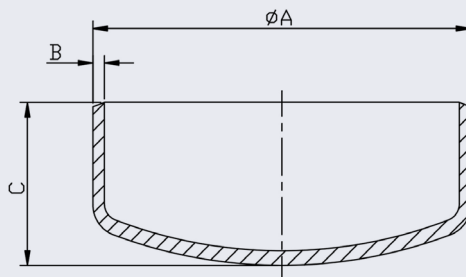


Butt Weld Cap



Less than x* = Cut square or slightly chamfer, at manufacturer's option.

NERO's range of Butt Weld Caps are made to ANSI B16.9 and MSS SP43. They are available in schedule 10-40 thickness and 316/L or 304/L material grades.

This item is of Far Eastern origin and 3.1b material certificates are available upon request.

Size	SCHEDULE 10						SCHEDULE 40					
	PRODUCT CODE		DIMENSIONS				PRODUCT CODE		DIMENSIONS			
	316/L	304/L	A	B	C	KG EACH	316/L	304/L	A	B	C	KG EACH
1/2	BC08/1	BC08/1-304	21.3	2.11	25.4	0.04	BC08/4	BC08/4-304	21.3	2.77	25.4	0.05
3/4	BC12/1	BC12/1-304	26.6	2.11	25.4	0.05	BC12/4	BC12/4-304	26.6	2.87	25.4	0.06
1	BC16/1	BC16/1-304	33.4	2.77	38.1	0.09	BC16/4	BC16/4-304	33.4	3.38	38.1	0.13
1-1/4	BC20/1	BC20/1-304	42.2	2.77	38.1	0.13	BC20/4	BC20/4-304	32.2	3.56	38.1	0.17
1-1/2	BC24/1	BC24/1-304	48.3	2.77	38.1	0.14	BC24/4	BC24/4-304	48.3	3.68	38.1	0.23
2	BC32/1	BC32/1-304	60.3	2.77	38.1	0.17	BC32/4	BC32/4-304	60.3	3.91	38.1	0.27
2-1/2	BC40/1	BC40/1-304	73	3.05	50.4	0.25	BC40/4	BC40/4-304	73	5.16	38.1	0.45
3	BC48/1	BC48/1-304	88.9	3.05	63.5	0.40	BC48/4	BC48/4-304	88.9	5.49	50.8	0.71
4	BC64/1	BC64/1-304	114.3	3.05	76.2	0.65	BC64/4	BC64/4-304	114.3	6.02	63.5	1.20
5	BC80/1	BC80/1-304	141.3	3.4	88.9	1.02	BC80/4	BC80/4-304	141.3	6.55	76.2	1.91
6	BC96/1	BC96/1-304	168.3	3.4	101.6	1.36	BC96/4	BC96/4-304	168.3	7.11	88.9	3.23
8	BC128/1	BC128/1-304	219.1	3.76	127	2.49	BC128/4	BC128/4-304	219.1	8.18	101.6	5.67
10	BC160/1	BC160/1-304	273.1	4.19	152.4	4.90	BC160/4	BC160/4-304	273.1	9.27	127	9.21
12	BC192/1	BC192/1-304	323.9	4.47	177.8	6.53	BC192/4	BC192/4-304	323.9	9.53	152.4	13.06
14	BC224/1	BC224/1-304	356	4.78	191	8.17						
16	BC256/1	BC256/1-304	406	4.78	203	10.67						

**** Dimensions subject to change - Please contact us if critical ****