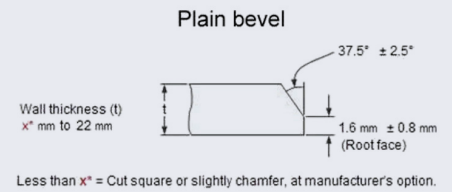
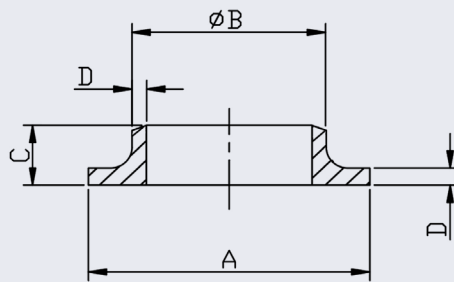


Butt Weld Pressed Collar



- Size range from 1" to 8" for nominal bore pipe
- Made in 304/L stainless steel

SIZE	PRODUCT CODE	A	B	C	D	KG EACH
1	BWPC16/1-304	69	33.4	8.1	2.77	0.14
1-1/4	BWPC20/1-304	79	42.1	10.2	2.77	0.21
1-1/2	BWPC24/1-304	89	48.1	9.2	2.77	0.25
2	BWPC32/1-304	102	60.3	11.9	2.77	0.38
2-1/2	BWPC40/1-304	123	73	11.5	3.05	0.47
3	BWPC48/1-304	140	88.9	12.8	3.05	0.60
4	BWPC64/1-304	158	114.3	17.4	3.05	0.98
5	BWPC80/1-304	188	141.3	16.2	3.40	1.24
6	BWPC96/1-304	212	168.2	20.4	3.40	1.95
8	BWPC128/1-304	241	219.08	23.1	3.76	2.61

**** Dimensions subject to change - Please contact us if critical ****

Other products you might like...

Did you know we also keep Butt Weld Stub Ends in Stainless and Backing Flanges in both Stainless & Zinc Plated?

