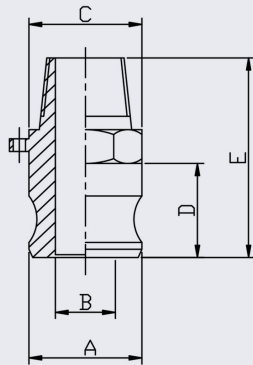
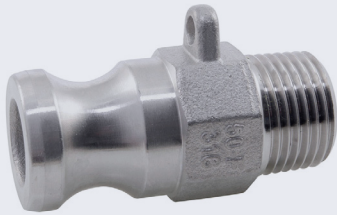


Cam Adaptor Male (Type F) BSPT 316



- Available in 316 stainless steel (CF8M)
- BUNA N (Nitrile) seals supplied as standard
- 100°C maximum temperature (when used with Nitrile seals)
- Made to standard A-A-59326 (MIL-C-27487) or DIN 2828
- Test Pressures 1/2" - 2" = 17.6 BAR (250 PSI)
- Test Pressures 2-1/2" = 15.8 BAR (225 PSI)
- Test Pressures 3" - 4" = 14.8 BAR (200 PSI)
- Test Pressures 5" - 6" = 10.5 BAR (150 PSI)

SIZE	CODE	A	B	C	D	E	KG/100
1/2	CCF08	32.0	16	34	28	58	10.8
3/4	CCF12	32.0	21	34	28	58	17.5
1	CCF16	36.7	24	41	34	70	25.7
1-1/4	CCF20	45.5	29	48	41	80	43.8
1-1/2	CCF24	53.4	36	56	43	83	58.5
2	CCF32	63.0	46	67	48	91	91.7
2-1/2	CCF40	75.8	56	83	51	100	125.2
3	CCF48	91.5	73	96	53	106	196.0
4	CCF64	119.5	99	127	53	114	333.0
5	CCF80	145.5	122	168	55	117	404.0
6	CCF96	175.9	146	192	60	129	471.6

**** Dimensions subject to change - Please contact us if critical ****

Other products you might like...

We also keep ISO B Quick Release Couplings and Nipples in this range



We also keep other types of Cam fittings to this standard

