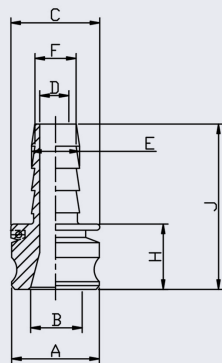


Cam Adaptor Hose (Type E) 316



- Available in 316 stainless steel (CF8M)
- BUNA N (Nitrile) seals supplied as standard
- 100°C maximum temperature (when used with Nitrile seals)
- Made to standard A-A-59326 (MIL-C-27487) or DIN 2828
- Test Pressures 1/2" - 2" = 17.6 BAR (250 PSI)
- Test Pressures 2-1/2" = 15.8 BAR (225 PSI)
- Test Pressures 3" - 4" = 14.8 BAR (200 PSI)
- Test Pressures 5" - 6" = 10.5 BAR (150 PSI)

SIZE	CODE	A	B	C	D	E	F	H	J	KG/100
1/2	CCE08	32.0	16	29	10	15.0	12.5	29	64	8.5
3/4	CCE12	32.0	21	33	14	21.4	18.6	38	89	15.1
1	CCE16	36.7	24	39	20	27.4	25.0	44	104	22.6
1-1/4	CCE20	45.5	29	48	25	33.9	31.8	51	111	41.7
1-1/2	CCE24	53.4	35	56	31	40.5	37.7	53	119	64.6
2	CCE32	63.0	45	66	43	53.2	50.0	58	135	90.0
2-1/2	CCE40	75.8	56	80	55	66.7	63.0	64	160	124.8
3	CCE48	91.5	67	102	67	79.0	75.0	66	170	177.5
4	CCE64	119.5	91	133	91	104.8	100.8	69	182	274.5
5	CCE80	145.5	122	158	117	134.0	130.0	73	200	470.0
6	CCE96	175.9	148	183	142	155.6	152.4	78	221	627.8

**** Dimensions subject to change - Please contact us if critical ****

Other products you might like...

We also keep ISO B Quick Release Couplings and Nipples in this range



We also keep other types of Cam fittings to this standard

