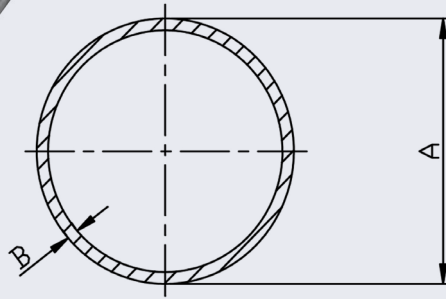


Nominal Bore Welded Pipe



How to work out the inside diameter of the pipe?

- Multiply the wall thickness by 2
- Then deduct this number off the OD of the pipe

NERO's range of Welded pipe is to ASTM A312/ANSI B36.19 and is available in 316/304/L material and Schedule 10 and 40 thickness.

We keep all sizes in full random lengths (6 metres) and sell by the metre, this enables us to supply lengths as short as 1 metre long.

We can also offer an accurate cutting service on any of our pipe to a tolerance of +/- 1mm.



PIPE SIZE	DN	CODE				DIMENSIONS			MAXIMUM WORKING PRESSURE (PSI)		KG/MTR	
		SCHEDULE 10 316/L	SCHEDULE 10 304/L	SCHEDULE 40 316/L	SCHEDULE 40 304/L	A (OD)	B (SCH10)	B (SCH40)	SCH10	SCH40	SCH10	SCH40
1/8	6	-	-	0.125S40316W	-	10.29	-	1.73	-	6288	-	0.37
1/4	8	-	-	0.25S40316W	-	13.72	-	2.24	-	6106	-	0.64
3/8	10	-	-	0.375S40316W	-	17.15	-	2.31	-	5351	-	0.87
1/2	15	0.5S10316W	0.5S10304W	0.5S40316W	0.5S40304W	21.34	2.11	2.77	3785	5133	1.02	1.29
3/4	20	0.75S10316W	0.75S10304W	0.75S40316W	0.75S40304W	26.67	2.11	2.87	2973	3466	1.3	1.71
1	25	1.0S10316W	1.0S10304W	1.0S40316W	1.0S40304W	33.40	2.77	3.38	2610	3234	2.13	2.54
1-1/4	32	1.25S10316W	1.25S10304W	1.25S40316W	1.25S40304W	42.16	2.77	3.56	2030	2654	2.73	3.44
1-1/2	40	1.5S10316W	1.5S10304W	1.5S40316W	1.5S40304W	48.26	2.77	3.68	1769	2378	3.16	4.11
2	50	2.0S10316W	2.0S10304W	2.0S40316W	2.0S40304W	60.33	2.77	3.91	1392	2001	3.99	5.52
2-1/2	65	2.5S10316W	2.5S10304W	2.5S40316W	2.5S40304W	73.03	3.05	5.16	1262	2204	5.34	8.77
3	80	3.0S10316W	3.0S10304W	3.0S40316W	3.0S40304W	88.90	3.05	5.49	1030	1900	6.56	11.47
4	100	4.0S10316W	4.0S10304W	4.0S40316W	4.0S40304W	114.30	3.05	6.02	798	1610	8.5	16.32
5	125	5.0S10316W	5.0S10304W	5.0S40316W	5.0S40304W	141.30	3.40	6.55	711	1407	11.74	22.1
6	150	6.0S10316W	6.0S10304W	6.0S40316W	6.0S40304W	168.28	3.40	7.11	595	1276	14.04	28.69
8	200	8.0S10316W	8.0S10304W	8.0S40316W	8.0S40304W	219.08	3.76	8.18	508	1131	20.27	43.2
10	250	10.0S10316W	10.0S10304W	10.0S40316W	10.0S40304W	273.05	4.19	9.27	450	1015	28.2	61.22
12	300	12.0S10316W	12.0S10304W	-	12.0S40304W	323.85	4.57	9.53	421	885	36.54	80.9
14	350	14.0S10316W	14.0S10304W	-	-	355.6	4.78	-	392	-	41.3	-
16	400	16.0S10316W	16.0S10304W	-	-	406.4	4.78	-	353	-	47.29	-

**** Dimensions subject to change - Please contact us if critical ****

Other products you might like...

Did you know we also keep flanges and Butt weld fittings to suit our range of pipe?

